

A School of Tomorrow!



Mastery Learning—grading is 90% mastery of skills on learning targets

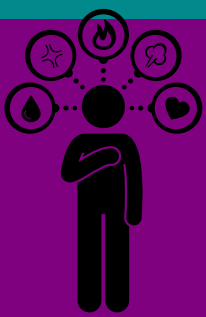


Engaging Instruction-

SHTEAM courses connected to advanced technology

02

Self-paced-
advancement based on
mastery and not time



Personalized—individual learning plans and projects based on interest

04

Post-secondary Opportunities— access to college prep and dual credit courses

Community Connection—internship and employment opportunities within the community

06

Career and Work Readiness Preparation—workplace simulations and leadership skills support



Seal of Biliteracy Attainment— second language requirement upon graduation

08

Comprehensive Learning Approach—intergrated social skills and mindfulness practice

Pathways Accelerating Career Experiences

Questions: PACInfo@cguhsd.org



Mastery Grading:

- Grades-90% based on mastery of learning on targets set, 10% on effort (established rubric used for assignments and projects)
- Focus on individual growth
- Senior year Capstone Project presentation

Engaging Instruction:

- Student Union Space-learning centers (independent workspaces), performance centers (classrooms)
- Personalized learning strategies/tailored project-based learning (simulate real life situations skills and interest inventories)
- ILPs (Individualized Learning Path) reviewed between student's vertical movement into the next level
- Digital adaptive learning programs/engaging digital opportunities (like the use of the virtual reality technology)
- SHTEAM (science, humanities, technology, engineering, arts, math) courses

Self-Paced:

- Advance performance centers based on evidence of 90% mastery and/or established career path criteria
- Multiple opportunities for mastery of standards

Post-secondary Experience and Credits:

- Access to college prep and college level/dual credit courses
- Partnership with CAC (Central Arizona Community College)

Community Connection and Career & Work Readiness:

- Internship opportunities and/or employment based on individual student goals
- Workplace simulations focused on the targeted skills needed from our community partners
- Clubs promoting develop/promote leadership skills and interests
- Next Education Workforce Model training for teachers (Arizona State University)

Comprehensive Learning Approach

- Integrate social skills, mindfulness-coping skill/attention/focus, diversity acceptance, etc.